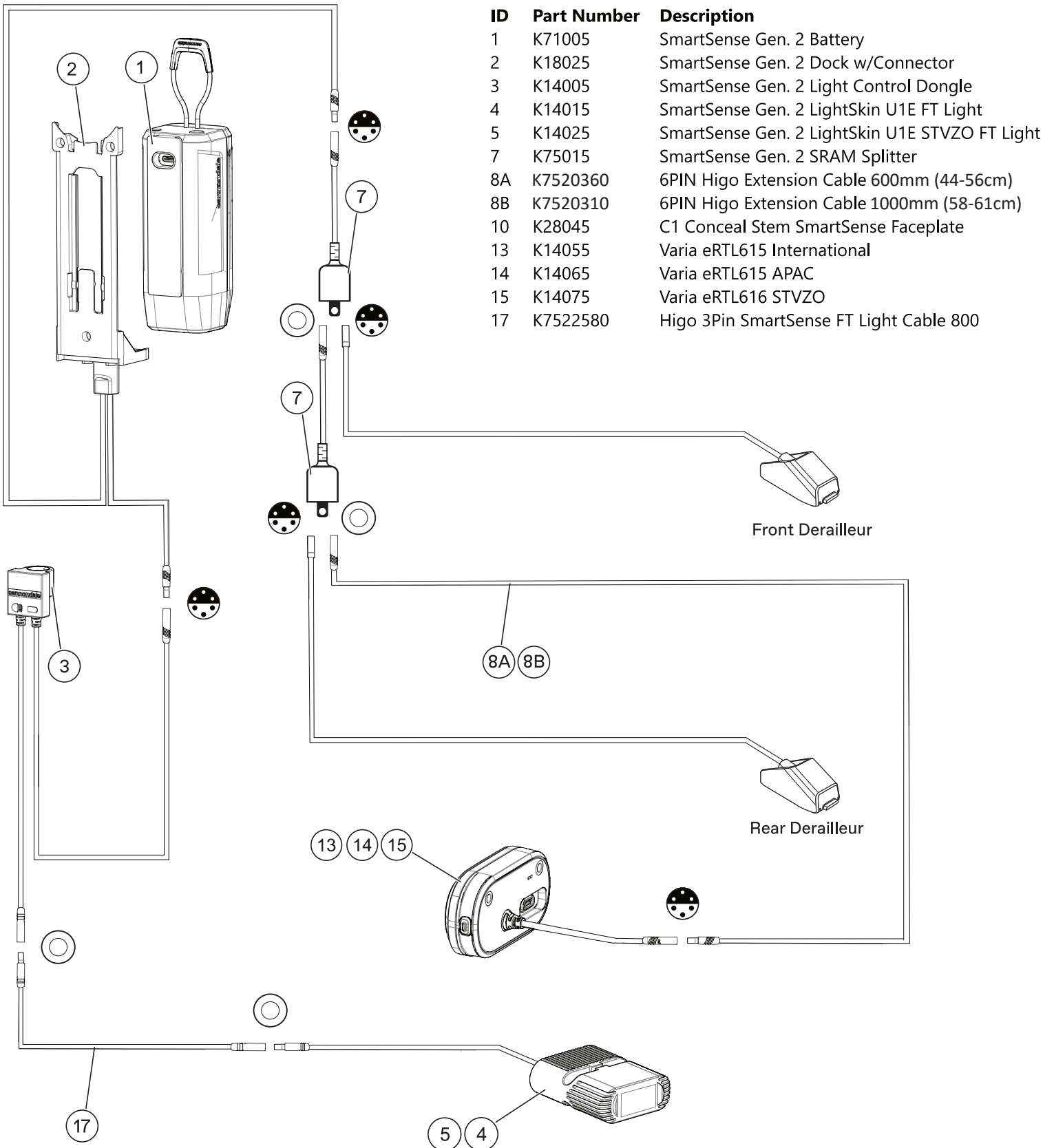


SmartSense

SmartSense II - 2x Drivetrain (Stock assembly)

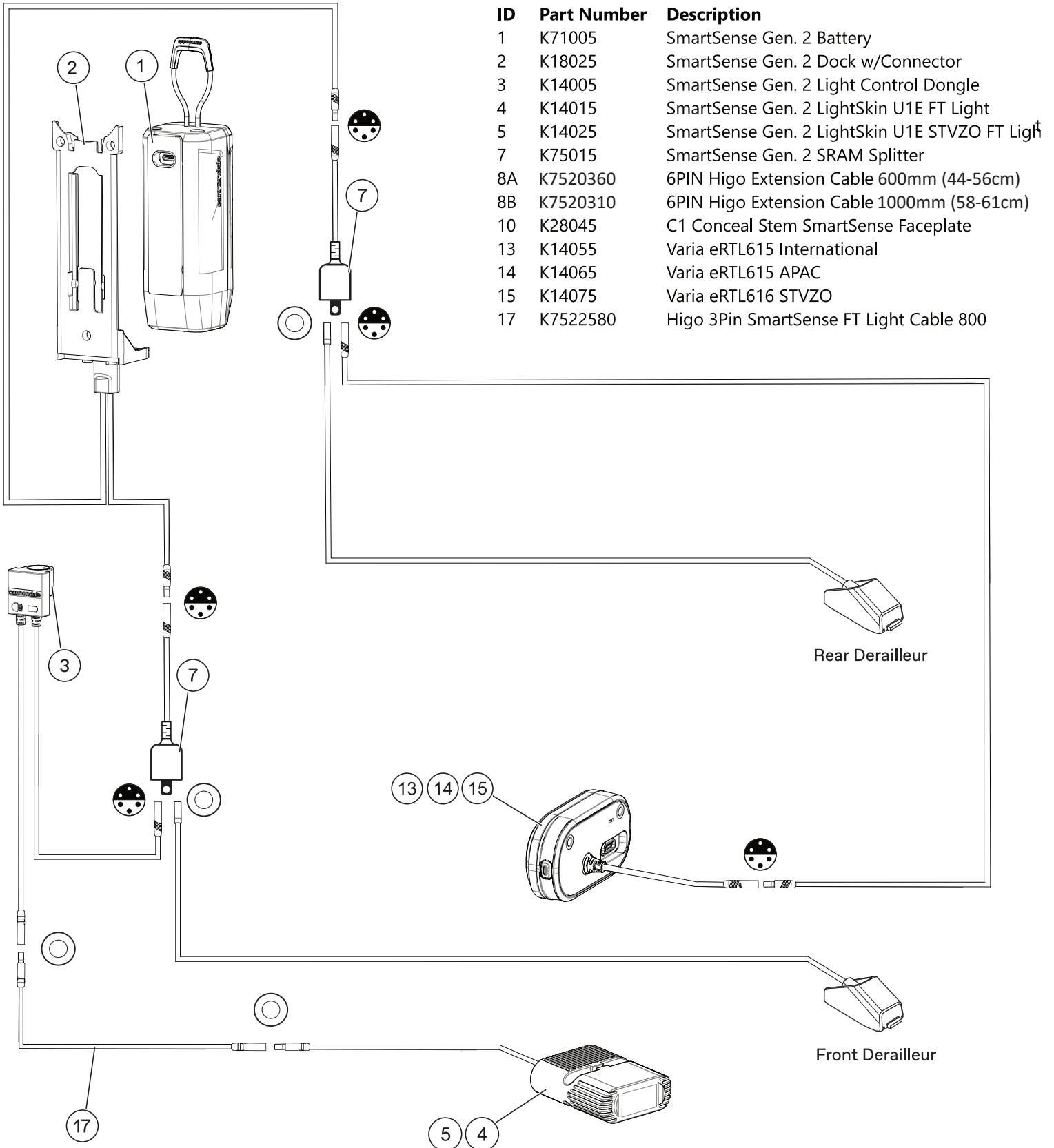
This is the default wiring configuration. The splitters are in series.



SmartSense

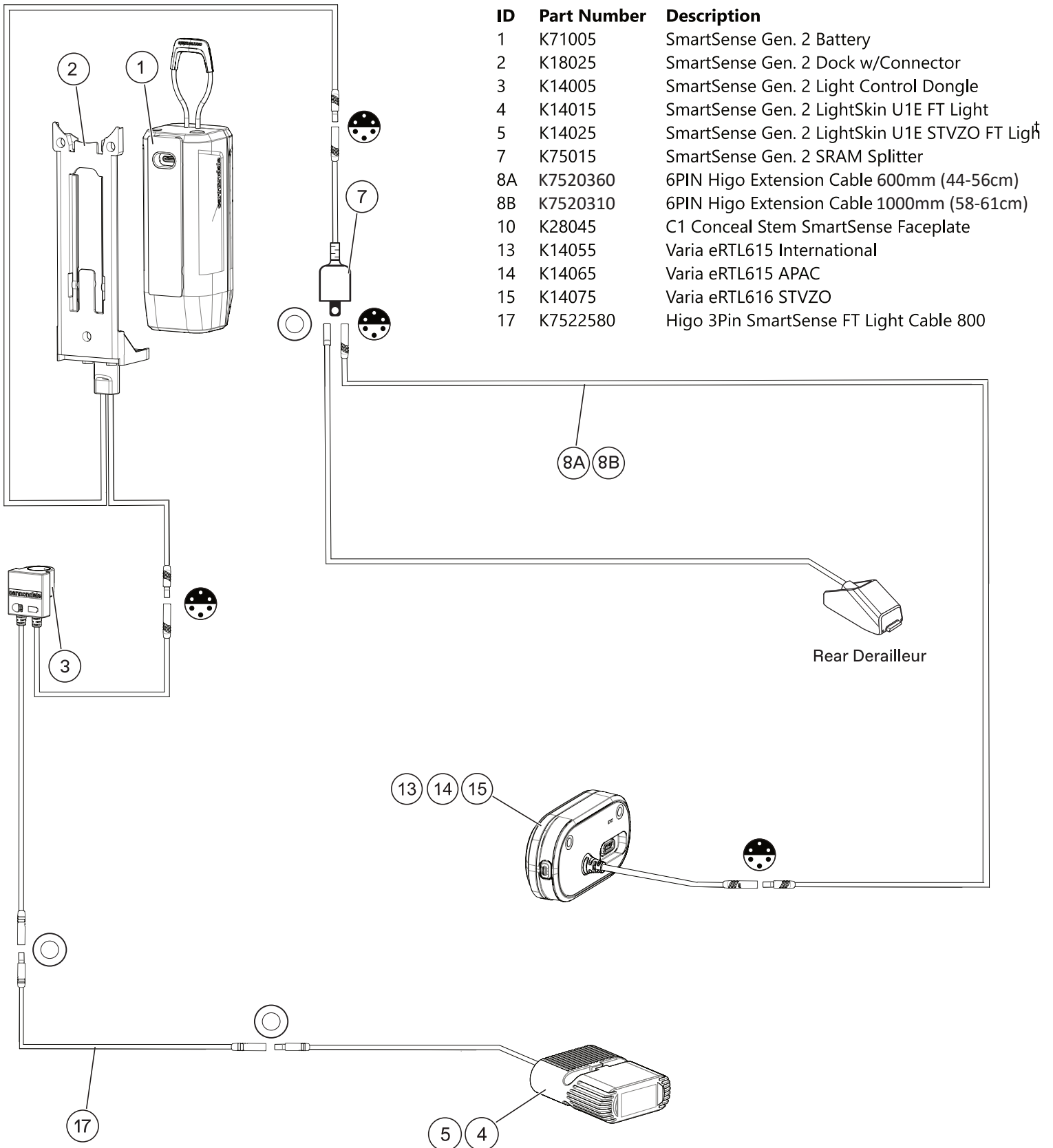
SmartSense II - 2x Drivetrain (alternative assembly)

Bikes may be alternatively wired this way. (The splitters are in parallel.)



SmartSense

SmartSense II - 1x Drivetrain



ID	Part Number	Description
1	K71005	SmartSense Gen. 2 Battery
2	K18025	SmartSense Gen. 2 Dock w/Connector
3	K14005	SmartSense Gen. 2 Light Control Dongle
4	K14015	SmartSense Gen. 2 LightSkin U1E FT Light
5	K14025	SmartSense Gen. 2 LightSkin U1E STVZO FT Light
7	K75015	SmartSense Gen. 2 SRAM Splitter
8A	K7520360	6PIN Higo Extension Cable 600mm (44-56cm)
8B	K7520310	6PIN Higo Extension Cable 1000mm (58-61cm)
10	K28045	C1 Conceal Stem SmartSense Faceplate
13	K14055	Varia eRTL615 International
14	K14065	Varia eRTL615 APAC
15	K14075	Varia eRTL615 STVZO
17	K7522580	Higo 3Pin SmartSense FT Light Cable 800